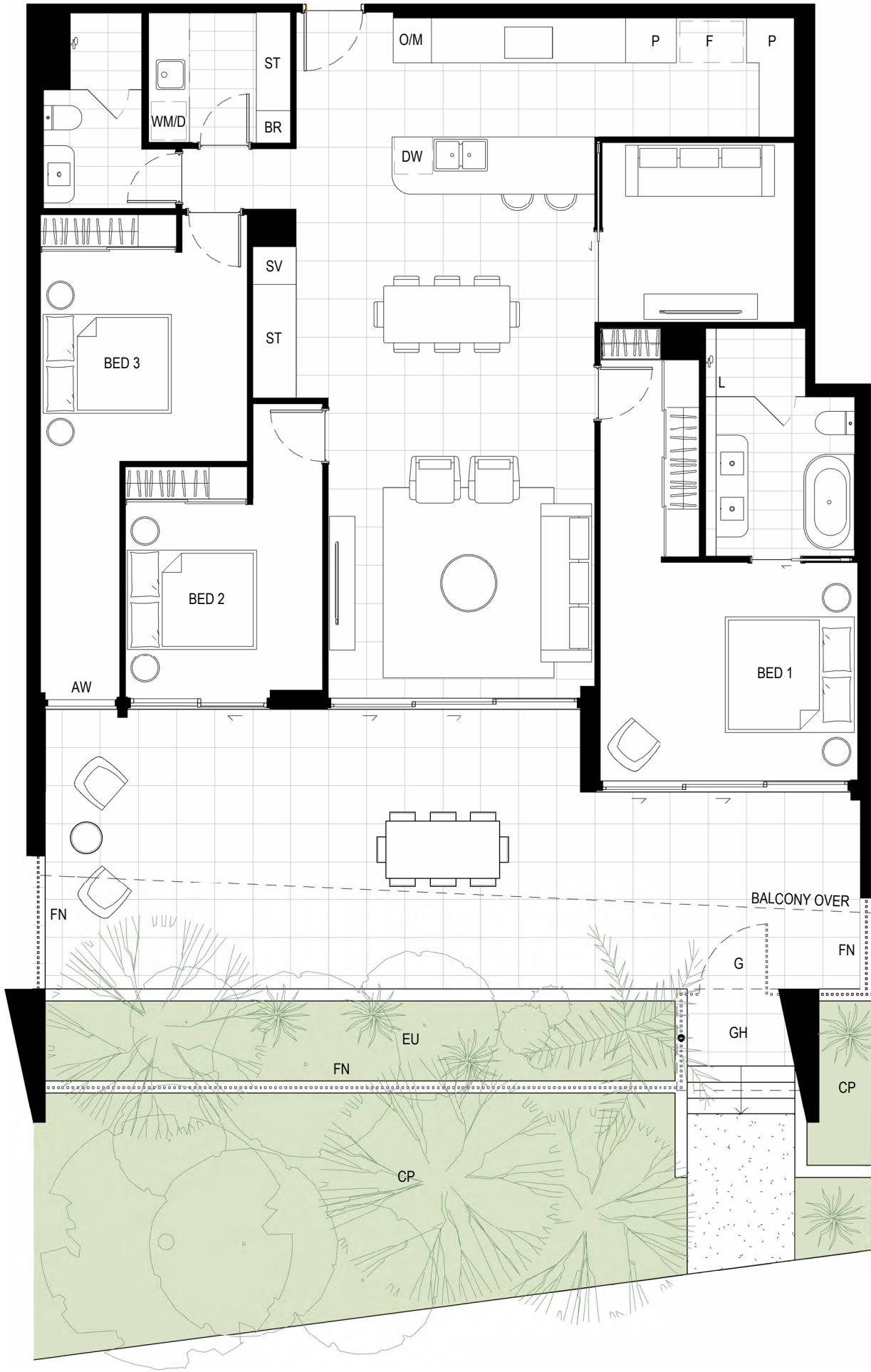


# TYDAL

SANDS

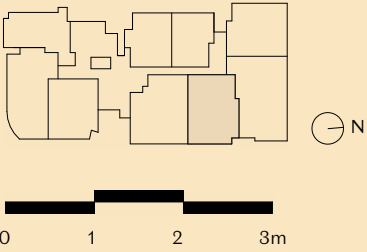


## APARTMENT 105

3 | 2 | 2 | 2

Internal	145m <sup>2</sup>
External	55m <sup>2</sup>
Total	200m <sup>2</sup>

- |    |                 |    |                       |
|----|-----------------|----|-----------------------|
| AW | Awning Window   | GH | Gatehouse             |
| BR | Broom Cupboard  | L  | Feature Ledge         |
| CP | Common Property | M  | Microwave             |
| D  | Dryer           | O  | Oven                  |
| DW | Dishwasher      | P  | Pantry                |
| EU | Exclusive Use   | ST | Storage Cupboard      |
| F  | Fridge Recess   | SV | Services Cupboard     |
| FN | Fence           | WM | Washing Machine Space |
| G  | Gate            |    |                       |



IMPORTANT LEGAL DISCLAIMER. PLEASE READ CAREFULLY Indicative only. This floor plan was produced prior to completion of construction. The information contained in this document is believed to be correct but is not guaranteed. Dimensions, areas and scale of floor plans are approximate. Changes may be made during construction. Dimensions, design features, floor areas, specifications and room configurations are subject to change, including in accordance with the terms of contract. . Any furniture shown is not included. All graphics, including design and extent of balustrades, tiling, paving and floor finishes, landscape and paved areas are indicative only. Bulkheads necessary for services are not depicted. The development is not completed and so the final product may differ from that depicted in this floorplan. Buyers should refer to the disclosure documents and contract.