

TYDAL

WOODY POINT

OCEANA

T

TYDAL

WOODY POINT

Introducing Tydal Oceana, the second chapter in the evolving story of Tydal at Woody Point.

Featuring a collection of beautifully crafted 2 and 3 bedroom apartments, surrounded by verdant landscaped gardens, Oceana invites you to embrace a lifestyle of effortless ease and tranquillity in one of the best positions in the Moreton Bay region.

CORNER KATE AND LILLA STREETS, WOODY POINT



1

HISTORY

CHAPTER ONE
PAGE 6

The gem of the Moreton Bay region, Woody Point is entering a new era, with Tydal Oceana at its heart.



3

INTERIORS

CHAPTER THREE
PAGE 20

Where form and function meet, Tydal Oceana delivers refined, yet modern comfort.



5

LOCATION

CHAPTER FIVE
PAGE 50

From golden sunrises to fresh sea breezes, Tydal Oceana is your sanctuary by the shore.

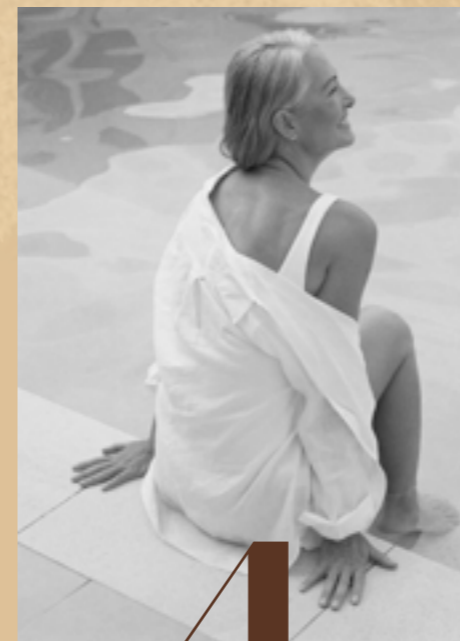


2

ARCHITECTURE

CHAPTER TWO
PAGE 12

Tydal Oceana's soft curves and lush gardens create a coastal oasis.



4

AMENITIES

CHAPTER FOUR
PAGE 44

Relax by the pool, surrounded by lush gardens and abundant amenities.



6

TEAM

CHAPTER SIX
PAGE 58

Informed by experience — a stroke of genius on one of the best locations in Woody Point.

CRAFTED BY THE COAST

Inspired by the gentle curves of the coastline, Oceana's design creates a harmonious balance between nature and architecture.

Here, you'll find a place to relax, recharge, and enjoy life at a different pace.

Just 40 minutes from the Brisbane CBD and an hour from the Sunshine Coast, Woody Point offers the perfect blend of relaxed beachside living and easy access to city conveniences.

It's a place where you can enjoy the very best of both worlds—without compromise.



7

CHAPTER ONE

HISTORY

STEEPED IN HISTORY



Artist Impression, Type 3 Balcony

STEEPED IN HISTORY

THE GREAT WESTERN HOTEL

St Leonard's Hotel, later renamed The Great Western, opens with a "first class lunch" offering elegant accommodation to "excursionists" travelling by steamer from Sandgate following the 1882 opening of Woody Point Jetty. After a succession of licensees the hotel, with three sitting rooms and 12 bedrooms, passes to William Duggan whose tenure lasts only months before it is destroyed by fire in 1907.

Image Right
The Great Western Hotel, 1883
Redcliffe Museum Photographic Collection

1883

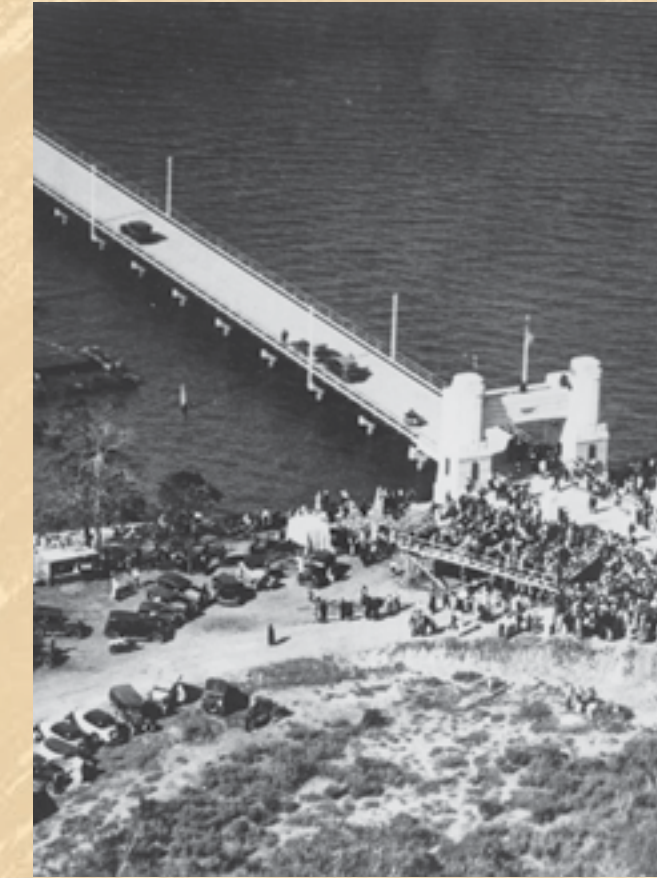


HORNIBROOK BRIDGE OPENING

Harold and Lilly Filmer take over the publican's licence, renovating the hotel and adding modern luxuries such as electric lighting and parking garages for guests. The rebranded Filmers Palace Hotel becomes a popular destination, a little too much so given the number of court appearances for selling liquor on Sundays and after hours. The opening of the Hornibrook Highway in 1935 brings increasing numbers of Brisbane holidaymakers, drinking their way through a five gallon keg of beer in a week. In 1937, the Filmers add a large ballroom, lounge, extended bar area and a telephone, Redcliffe 26, to their thriving establishment.

Image Right
Opening of the first Hornibrook Highway bridge, Redcliffe, 1935
State Library of Queensland

1935



THE BEE GEES

Filmers Palace Hotel becomes the unlikely launching pad for the Bee Gees, whose 220 million record sales make them one of the most successful bands of all time. For the price of a Coca-Cola and a jug of beer for Mum and Dad, Hugh and Barbara Gibb, brothers Brian, 12, and Robin and Maurice, 8, perform what is credited as their first paid gig. The youngsters are seasoned performers having played as the skiffle rock and roll group, The Rattlesnakes, before their parents leave Manchester in 1958 under Australia's 'Ten Pound Pom' migration program. The boys perform three nights a week at The Palace and while the family lives in Redcliffe for only two years the Brothers Gibb leave behind an enduring legacy.

Image Right
The Bee Gees in their younger days, 1959
The Pictorial History of Redcliffe and Moreton Bay Region Collection

1959



PRE-COLONIAL

WOODY POINT SHORELINE

Woody Point was a well-established camp for the Gubbi Gubbi and Ningy Ningy clans of the Undambi people prior to the arrival of Matthew Flinders in 1799. Groups from far afield would come for corroborees and the mullet run, dugong and turtle hunts. A short-lived attempt to establish a penal colony in 1824 was abandoned in favour of Brisbane when local clans fiercely defended their land. With the arrival of settlers in their numbers in the 1870s, the Aboriginal population dwindled through displacement and disease.

Image Right
Woody Point shoreline, 1876
State Library of Queensland



1908

THE PALACE HOTEL

After the fire, the site is auctioned off and by November 1908, The Palace Hotel rises from the ashes with Albert Goodwin listed as publican. Goodwin finds himself in the occasional spot of bother for selling liquor on a Sunday but any smear upon the family name is erased when his son saves three people from drowning in 1914. Once again, a revolving door of licensees follows until the Filmer family's arrival.

Image Left
The Palace Hotel, 1908
Redcliffe Historical Society Inc.



1952

MAVIS FILMER

In 1943, the Filmers' son Ken marries Mavis Long, the daughter of a local police sergeant whom he met at the telephone exchange. Ken runs an electrical business but in 1952, he and Mavis take over management of the hotel, introducing floor shows and live bands, tapping into the exciting era of '50s rock 'n' roll. The hull of the decommissioned HMQS Gayundah warship is beached at Woody Point, becoming a popular attraction for tourists.

Image Left
Mavis Filmer outside The Palace Hotel



2001

THE PALACE HOTEL

By turn of century the live bands are long gone, shut down by noise complaints from neighbours in the '70s and replaced with pokies for entertainment. Mavis sells the hotel in 2001, ending 75 years of ownership by the Filmer family. The name reverts to The Palace Hotel and it continues to operate as new owners serve last drinks in 2013.

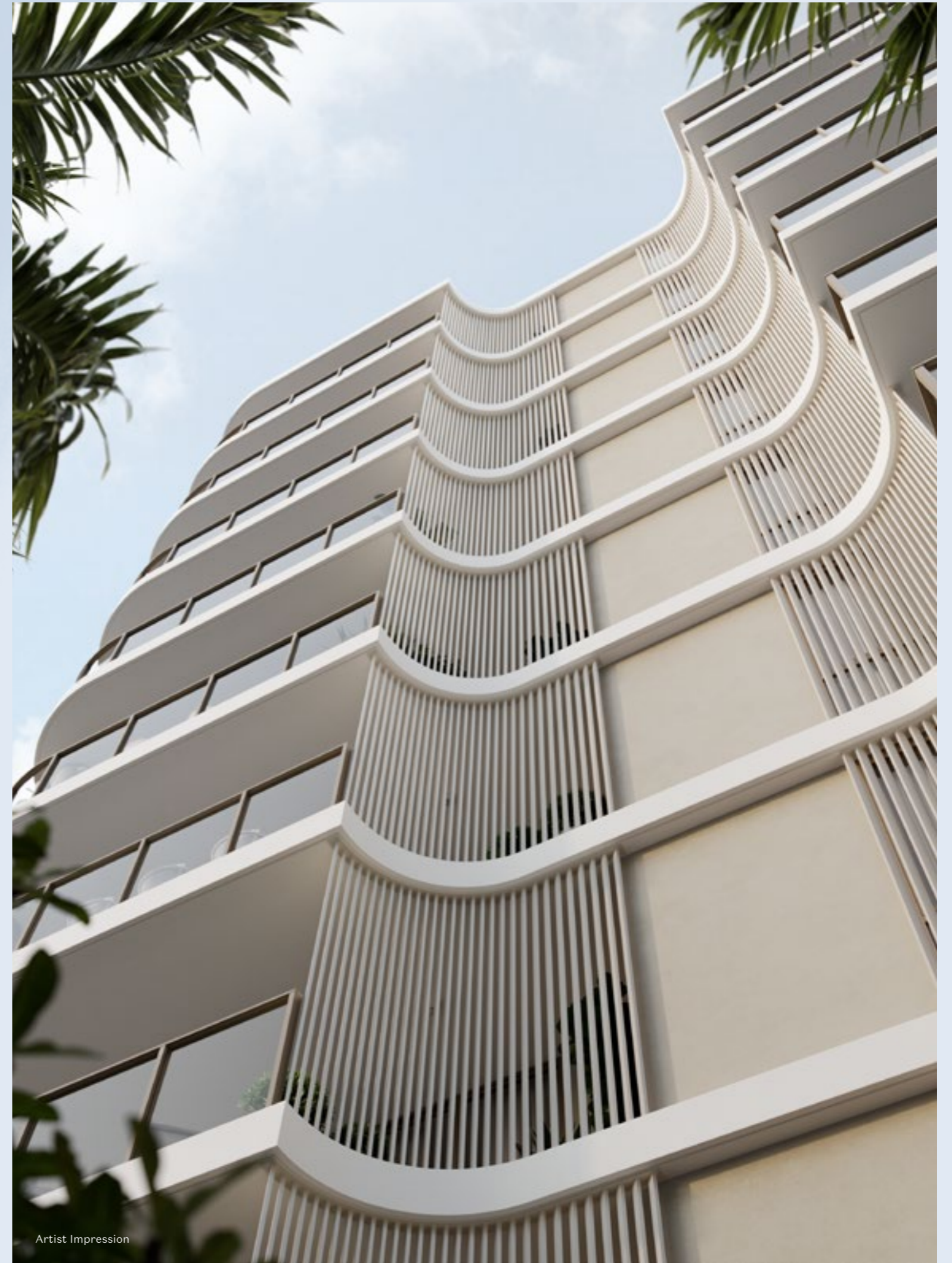
Image Left
The Palace Hotel, 2007
Image courtesy of City of Moreton Bay, reference number MBPS-0044

T

CHAPTER TWO

ARCHITECTURE

A STROKE OF TIMELESS DESIGN



Artist Impression



Artist Impression

COASTAL LIVING, NATURALLY YOURS

Drawing inspiration from the surrounding Woody Point coastline, the building's soft curves emulate ripples on the water, creating a timeless and restrained silhouette. The natural colour palette, featuring warm tones, crisp whites, and lush greenery, anchors the building in its coastal setting, offering a sense of effortless belonging.

**“THE REFINED AESTHETIC OF THE
OVERALL BUILDING FORM IS SOFTENED
BY CURVED CORNER BALCONIES AND
FACADE RECESSES THAT EMULATE
RIPPLES ON THE WATER.”**

Daniel Volpato
Director,
Ellivo Architects



Woody Point Jetty, only 600m away

T

CHAPTER THREE
INTERIORS

CRAFTING YOUR COASTAL OASIS



Artist Impression, Type 3 Dining

TIMELESS TRANQUILLITY, CLOSE TO THE SHORE

Influenced by its adjoining neighbour Tydal Sands, the interiors at Tydal Oceana are a seamless continuation of refined coastal aesthetic, offering a tranquil, sophisticated living experience.



Artist Impression, Type 5 Kitchen



Artist Impression, Type 7 Living

A SEAMLESS BLEND OF COAST AND COMFORT

Designed in harmony with the laid-back atmosphere of the Peninsula, Tydal Oceana combines timeless elegance with the warmth of a true beachside sanctuary. Every detail has been crafted to celebrate the beauty of its natural surroundings, offering residents a serene escape that feels innately connected to its environment.




A LIFESTYLE SHAPED BY COASTAL CALM

Like ripples on the water, the interiors embrace a fluid design that connects each room effortlessly. Open-plan layouts blend dining, living, and outdoor areas, while expansive glazing invites natural light and surrounding views. Finishes and materials have been thoughtfully selected to ensure a harmonious transition between spaces.



Artist Impression, Type 6 Balcony

A modern balcony with a round table and chairs overlooking a coastal town. The balcony features a curved white slat railing on the left and a large green plant on the right. The table is set with a bottle of water, glasses, and a bowl of fruit. The view shows a residential area with houses and trees, leading to a beach and the ocean under a blue sky with light clouds.

**“SEAMLESS DESIGN CREATES
A SENSE OF CALM, ECHOING
THE FLOW OF THE COASTAL
ENVIRONMENT.”**

Lisa Schiffermuller
Associate Director, Interior Design
Ellivo Architects



Artist Impression, Type 4 Kitchen, Dining and Living



THOUGHTFUL SPACES, CURATED MOMENTS

At the heart of the home is a well-appointed entertainers kitchen. Soft curved forms and ample storage make for an architecturally striking and highly functional kitchen.

The use of mirrored splashbacks, feature curved joinery and premium European appliances deliver a sense of quality and refinement.

At Tydal Oceana, our standard inclusions go above and beyond, with further upgrade opportunities available.

1. Bosch appliances
2. Feature curved joinery
3. LED strip lighting
4. Overhead cupboards
5. Butlers pantry with additional storage
6. Smokey grey mirrored splashback
7. Ducted air conditioning
8. Villeroy & Boch tapware
9. Engineered stone benchtops



Artist Impression, Type 7 Kitchen





Artist Impression, Type 8 Bedroom

ELEVATE YOUR EVERYDAY

Step into your serene retreat. Each bathroom and ensuite at Tydal Oceana has been crafted with utmost attention to detail. Natural textures and clean lines create a sense

of calm, while Villeroy & Boch tapware adds a touch of refined luxury. Modern yet timeless, these sanctuaries are designed to elevate your daily rituals.



Artist Impression, Type 5 Bathroom

7

CHAPTER FOUR

AMENITIES

WHERE YOU CAN ENJOY EVERY MOMENT



Steps away from pool access



Artist Impression

YOUR SANCTUARY BY THE SHORE

At Tydal Oceana, life extends effortlessly beyond your front door. The building's amenities are designed to make every day feel like a getaway, blending convenience, leisure, and community.

Relax by the sparkling swimming pool, where sun lounges invite you to linger. Entertain family and friends in the shared alfresco dining and BBQ area.

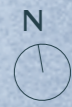
Or take a seat under the canopy of Tydal Oceana's feature meeting tree – a serene spot to connect or reflect.

With a carefully curated blend of private and shared spaces, Tydal Oceana provides the perfect balance of quiet retreat and community living.



BUILDING FEATURES

- 1. BBQ Area with Alfresco Dining
- 2. Swimming Pool
- 3. Sun Lounges
- 4. Feature Meeting Tree with Seating
- 5. Outdoor Shower
- 6. Resident's Lobby
- 7. Secondary Access to Resident Amenity
- 8. Basement Carpark Entry
- 9. Tydal Sands Resident Amenity



TYDAL
OCEANA

TYDAL
SANDS

KATE STREET

LILLA STREET

GAYUNDAH ESPLANADE

7

CHAPTER FIVE

LOCATION

EFFORTLESS LIVING



The Belvedere



Scotts Point



Margate Beach



Rustic Olive



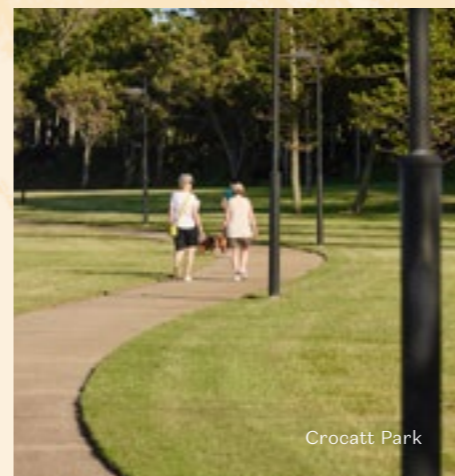
Woody Point Jetty

THE EFFORTLESS LIFE YOU LOVE



Streetscapes of Woody Point

Enjoy the best of Woody Point and its idyllic surroundings. From vibrant cafes and restaurants to scenic coastal walks and the atmosphere of the iconic Belvedere Hotel, there's always something to explore. Experience the relaxed, village charm of Woody Point, where everything you need is within reach.



Crocatt Park



Butcher Baker

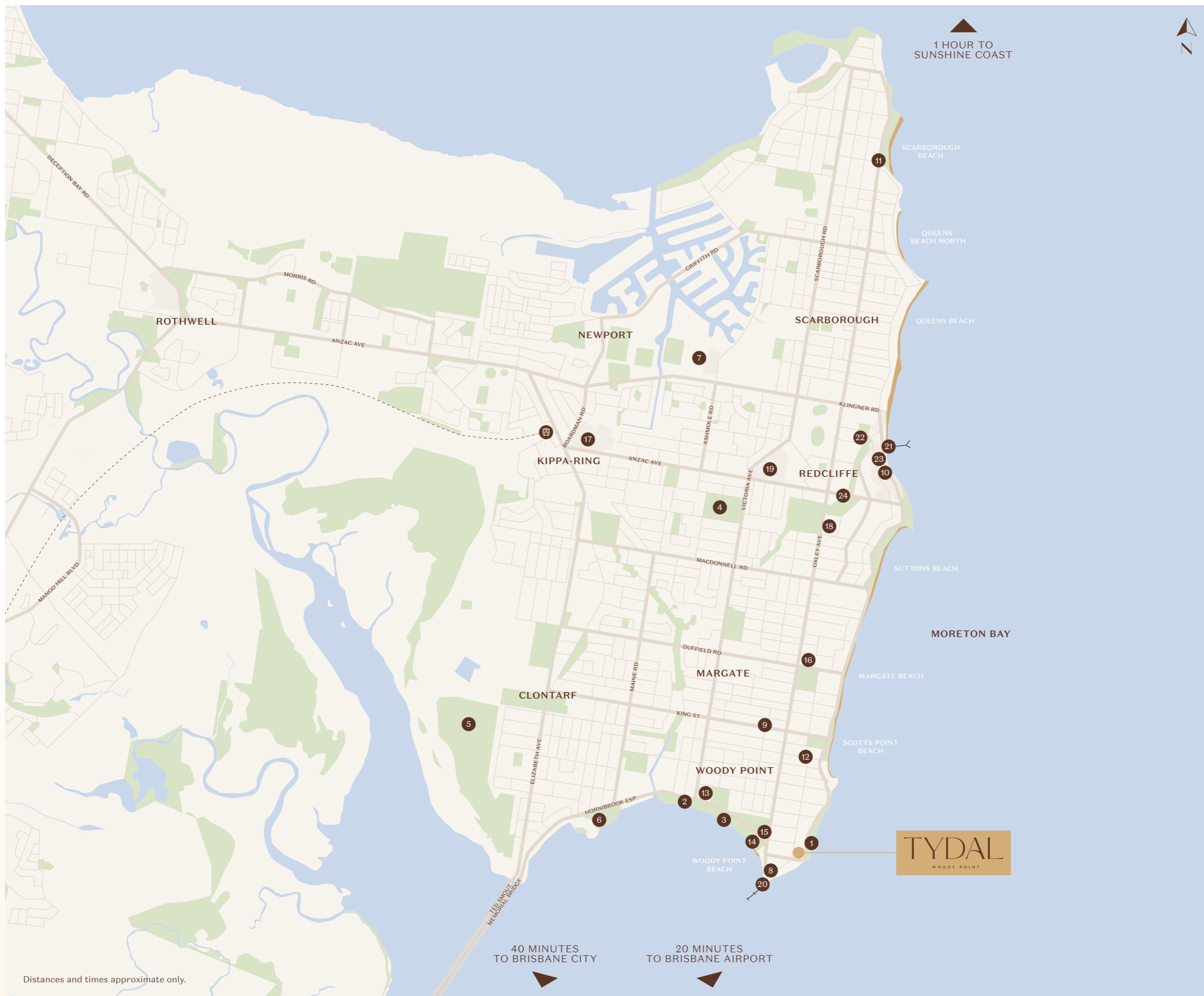
IT'S EASY TO FALL IN LOVE WITH WOODY POINT'S CHARMING AND LAID-BACK VILLAGE LIFESTYLE.



Scott's Beach



The Belvedere



Distances and times approximate only.

LIFE AT EASE

Be it rest and relaxation or discovery and adventure, Tydal Oceana has it all. There is a sense of freedom, to experience each moment as it comes. Discover easy living at its best, from leisurely walks along the coast to fishing on the jetty. Go sailing, swimming or pursue what brings you joy.

PARKS AND NATURE

1. Gayundah Coastal Arboretum
2. Bicentennial Park
3. Apex Park
4. Redcliffe Botanic Gardens
5. Redcliffe Golf Course
6. Pelican Park

LIFESTYLE AND ENTERTAINMENT

7. Dolphin Stadium
8. Woody Point Village
 - Woody Point Cafe 3Eightnine
 - Butcher Baker Coffeemaker
 - The Belvedere
 - Woody Point Pharmacy
 - Woody Point Medical
9. Woody Point Marketplace
10. The Rustic Olive
11. The Boat Shed Scarborough
12. Organics 4 Life
13. Bramble Bay Bowls Club
14. Humpybong Yacht Club
15. Eildon Croquet Club

LOCAL AMENITY

16. Margate Village Shopping Centre
17. Kippa-Ring Shopping Centre
18. Redcliffe War Memorial Swimming Pool
19. Redcliffe Hospital
20. Woody Point Jetty
- 🚉 Kippa-Ring Train Station

LANDMARKS

21. Redcliffe Jetty
22. Redcliffe Art Gallery
23. Bee Gees Way
24. Redcliffe Museum

T

CHAPTER SIX
TEAM

ARTFULLY DEVELOPED



Artist Impression, Marin Scarborough

Developers

TRADERS IN PURPLE

Traders In Purple is an Australian owned national property and construction group delivering a world-class service for over 20 years.

With expertise, knowledge, care and commitment we create and deliver homes that our customers love to live in. Our stringent benchmarks ensure unparalleled craftsmanship, creating exceptional homes and communities, underpinned by a deep understanding of the local region.

With an integrity in everything we do, quality materials and design in a class of its own, our homes set the highest standard and stand the test of time.



Lasail, Newport

Architects

ELLIVO

Ellivo Architects are experienced multi-residential, commercial, and mixed-use architects based locally in Brisbane. Ellivo Architects place great value in the creation of meaningful spaces and places for the people that will inhabit and enjoy them. With a mix of architects and interior designers, they have over 25 years' experience in multi-residential, townhouse, residential and master-planned design, as well as interior fit outs.



Thornlyffe Residences, Kangaroo Point

Landscape Architects

ARCADIA

Arcadia is a landscape architecture and urban design practice established in 2011, with teams based in studios in Sydney, Brisbane, Melbourne and Canberra. An award winning practice working at the intersection of built form and nature, Arcadia's capabilities are positioned to provide thoughtful integration of the natural environment, alongside high-quality architecture.



Inglis Park, Newmarket – Randwick

ACKNOWLEDGEMENT OF COUNTRY

Traders In Purple respectfully acknowledge the Traditional Country across the Moreton Bay region. We acknowledge and pay respects to the Kabi Kabi, Jinibara and Turrbal Traditional Custodians and their elders, past, present and emerging.



