

TYDAL

WOODY POINT

Traders In Purple

T

TYDAL

WOODY POINT

Introducing Tydal Woody Point, a collection of beautifully crafted 2 and 3 bedroom apartments, many with breathtaking water views.

A hidden gem in one of the best positions in the Moreton Bay region, many locals have lived in Woody Point all their lives, and many who once left are coming home to their fondest memories. Tydal is becoming a pivotal landmark for Woody Point's rejuvenation, an iconic new address.

8 GAYUNDAH ESPLANADE, WOODY POINT



HISTORY

CHAPTER ONE
PAGE 6

Once the pulse of the neighbourhood, Tydal will bring a new lease of life to this historic address.



INTERIORS

CHAPTER THREE
PAGE 22

Where form and function meet, Tydal delivers refined, yet modern comfort.



LOCATION

CHAPTER FIVE
PAGE 58

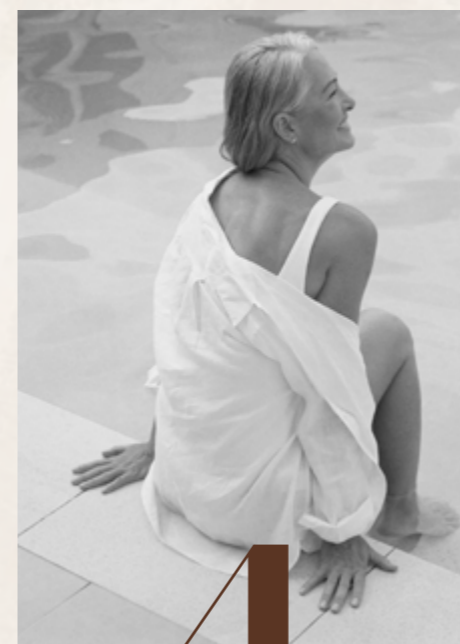
From the daily sunrise to golden sunsets – Tydal is easy living at its best.



ARCHITECTURE

CHAPTER TWO
PAGE 12

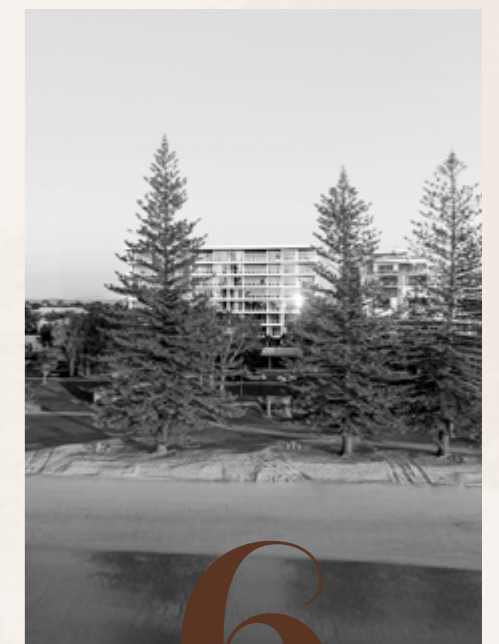
Tydal's undulating curves and natural tones are inspired by the coastline.



AMENITIES

CHAPTER FOUR
PAGE 50

Relax by the pool, surrounded by lush gardens and abundant amenities.



TEAM

CHAPTER SIX
PAGE 68

Informed by experience – a stroke of genius on one of the best locations in Woody Point.

YOUR PLACE, YOUR PACE

Inspired by the coastline, Tydal's soft undulating curves and smooth flowing geometry reflect its surrounding sandbanks, coves, cliffs and beaches, sculpted over time.

Just 40 minutes from the Brisbane CBD and an hour from the Sunshine Coast, Woody Point promises a lifestyle that embraces the ocean and coastline. At Woody Point, people go with flow. Immerse yourself in the bay's natural rhythm.



7

CHAPTER ONE

HISTORY

STEEPED IN HISTORY



STEEPED IN HISTORY

THE GREAT WESTERN HOTEL

St Leonard's Hotel, later renamed The Great Western, opens with a "first class lunch" offering elegant accommodation to "excursionists" travelling by steamer from Sandgate following the 1882 opening of Woody Point Jetty. After a succession of licensees the hotel, with three sitting rooms and 12 bedrooms, passes to William Duggan whose tenure lasts only months before it is destroyed by fire in 1907.

Image Right
The Great Western Hotel, 1883
Redcliffe Museum Photographic Collection

1883



Palace Hotel, Woody Point, Q'land.

HORNIBROOK BRIDGE OPENING

Harold and Lilly Filmer take over the publican's licence, renovating the hotel and adding modern luxuries such as electric lighting and parking garages for guests. The rebranded Filmers Palace Hotel becomes a popular destination, a little too much so given the number of court appearances for selling liquor on Sundays and after hours. The opening of the Hornibrook Highway in 1935 brings increasing numbers of Brisbane holidaymakers, drinking their way through a five gallon keg of beer in a week. In 1937, the Filmers add a large ballroom, lounge, extended bar area and a telephone, Redcliffe 26, to their thriving establishment.

Image Right
Opening of the first Hornibrook Highway bridge, Redcliffe, 1935
State Library of Queensland

1935



THE BEE GEES

Filmers Palace Hotel becomes the unlikely launching pad for the Bee Gees, whose 220 million record sales make them one of the most successful bands of all time. For the price of a Coca-Cola and a jug of beer for Mum and Dad, Hugh and Barbara Gibb, brothers Brian, 12, and Robin and Maurice, 8, perform what is credited as their first paid gig. The youngsters are seasoned performers having played as the skiffle rock and roll group, The Rattlesnakes, before their parents leave Manchester in 1958 under Australia's 'Ten Pound Pom' migration program. The boys perform three nights a week at The Palace and while the family lives in Redcliffe for only two years the Brothers Gibb leave behind an enduring legacy.

Image Right
The Bee Gees in their younger days, 1959
The Pictorial History of Redcliffe and Moreton Bay Region Collection

1959



PRE-COLONIAL

WOODY POINT SHORELINE

Woody Point was a well-established camp for the Cubbi Cubbi and Ningy Ningy clans of the Undambi people prior to the arrival of Matthew Flinders in 1799. Groups from far afield would come for corroborees and the mullet run, dugong and turtle hunts. A short-lived attempt to establish a penal colony in 1824 was abandoned in favour of Brisbane when local clans fiercely defended their land. With the arrival of settlers in their numbers in the 1870s, the Aboriginal population dwindled through displacement and disease.

Image Right
Woody Point shoreline, 1876
State Library of Queensland



1908

THE PALACE HOTEL

After the fire, the site is auctioned off and by November 1908, The Palace Hotel rises from the ashes with Albert Goodwin listed as publican. Goodwin finds himself in the occasional spot of bother for selling liquor on a Sunday but any smear upon the family name is erased when his son saves three people from drowning in 1914. Once again, a revolving door of licensees follows until the Filmer family's arrival.

Image Left
The Palace Hotel, 1908
Redcliffe Historical Society Inc.



1952

MAVIS FILMER

In 1943, the Filmers' son Ken marries Mavis Long, the daughter of a local police sergeant whom he met at the telephone exchange. Ken runs an electrical business but in 1952, he and Mavis take over management of the hotel, introducing floor shows and live bands, tapping into the exciting era of '50s rock 'n' roll. The hull of the decommissioned HMQS Gayundah warship is beached at Woody Point, becoming a popular attraction for tourists.

Image Left
Mavis Filmer outside The Palace Hotel



2001

THE PALACE HOTEL

By turn of century the live bands are long gone, shut down by noise complaints from neighbours in the '70s and replaced with pokies for entertainment. Mavis sells the hotel in 2001, ending 75 years of ownership by the Filmer family. The name reverts to The Palace Hotel and it continues to operate as new owners serve last drinks in 2013.

Image Left
The Palace Hotel, 2007
Image courtesy of City of Moreton Bay, reference number MBPS-0044

7

CHAPTER TWO
ARCHITECTURE

A STROKE OF ELEGANT DESIGN



INSPIRED BY NATURE'S CRAFT

A feeling of ease is created upon arrival at Tydal, through the careful use of form and materials. The entry foyer is defined by a collection of soft curves that invites you inside, softened by lush landscaping. A finishes palette of natural colours and textures create a calm and inviting space for residents to meet and relax.



Artist Impression

“TYDAL DRAWS INSPIRATION FROM THE NATURAL ELEMENTS FOUND ALONG THE SANDY SHORES OF WOODY POINT, AIMING TO CREATE AN ARCHITECTURAL ENVIRONMENT THAT IS INTIMATELY CONNECTED TO ITS SETTING.”

Daniel Volpato
Director,
Ellivo Architects





A BRUSH WITH NATURE

The architectural design of Tydal has been inspired by the naturally occurring forms of the surrounding Woody Point coastline. The facade's soft undulating curves reflect the coastal environment that has been formed over time while feature battens add interest to the facade.



7

CHAPTER THREE
INTERIORS

CRAFTING LIFELONG MEMORIES



CRAFTED SERENITY, REFINED QUALITY

Guided by its picturesque location and a desire for idyllic living, Tydal delivers refined, yet modern comfort. There is great attention to detail in the interior design, where form, function and style are equally considered.



Artist Impression, Type 4 Living



Gayundah Coastal Arboretum, only 120m away



Artist Impression, Type 5 Balcony

SEAMLESS SOPHISTICATION, ENDLESS HORIZON

Perched on the highest elevation in Woody Point, Tydal is perfectly positioned to offer views from every aspect. Thoughtful layouts boast flowing spaces and large balconies, maximising views to the bay. Bask in picturesque moments, from dawn to dusk, as you look out to the horizon. Marvel at the sunrise to the east and the sunset to the west with a cup of coffee or an evening drink. Let your senses take it all in.





Artist Impression, Type 9 Living



**“A SIMPLE YET STUNNING
COASTAL PALETTE COMBINED
WITH WARM TIMBER
ELEMENTS COMPLEMENT
THE BAYSIDE SETTING.”**

Lisa Schiffermuller

Associate Director, Interior Design

Ellivo Architects





Artist Impression, Type 5 Kitchen, Dining and Living





THOUGHTFUL SPACES, CURATED MOMENTS

At the heart of the home is a well-appointed entertainers kitchen. The soft curve forms of the feature overhead cupboards and kitchen bench design further echo Tydal's distinctive architecture.

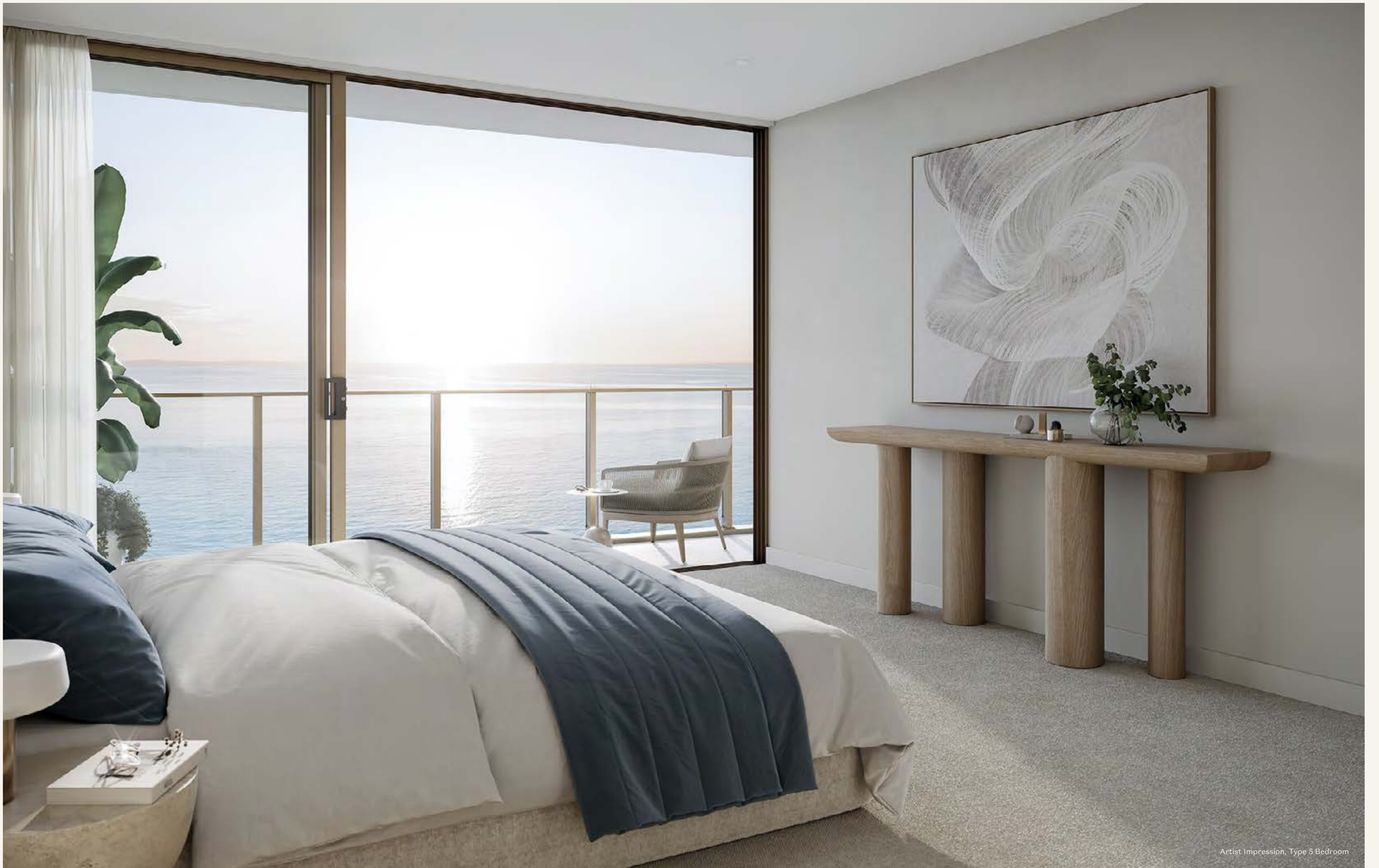
The use of mirrored splashbacks, feature fluted joinery and premium European appliances deliver a sense of quality and refinement.

At Tydal, our standard inclusions go above and beyond, with further upgrade opportunities available.

1. Miele appliances
2. Feature fluted joinery
3. LED strip lighting
4. Feature curved overhead cupboards
5. Butlers pantry with additional storage
6. Smokey grey mirrored splashback
7. Ducted air conditioning
8. Abundant apartment storage
9. Villeroy & Boch tapware



Artist Impression, Type 7 Kitchen



Artist Impression, Type 5 Bedroom

UNWIND AND RELAX

The generous master ensuite includes ambient lighting and full-height tiling, complementing the vertical lines of Tydal's distinctive architecture.

A sleek bathtub, Villeroy and Boch tapware, mirrored cabinets and ample storage complete your spacious, private sanctuary. Bespoke details include a feature shelf, further enhancing the space.



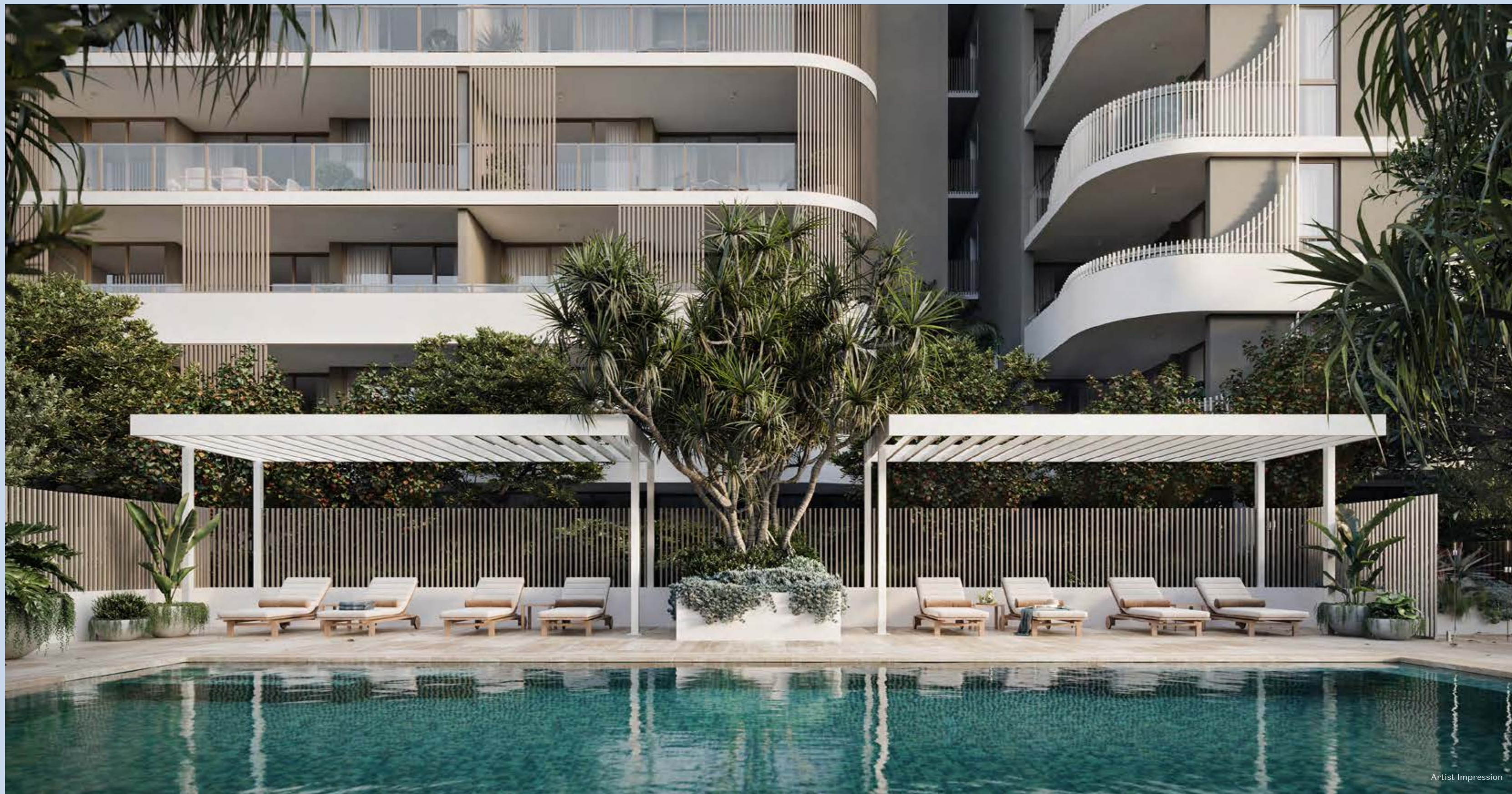
Artist Impression, Type 9 Ensuite

T

CHAPTER FOUR
AMENITIES

WHERE LIFE'S A BREEZE





Artist Impression

ATTUNED TO NATURE

Immerse in resort-like amenities. Let your day melt away in the pool, or relax in the sunshine with a good book, surrounded by lush verdant gardens.

Tydal has been designed to create a real sense of community. The resident's lounge and communal areas offer beautiful spaces in which to meet with friends and neighbours, entertain guests, or enjoy a movie night.

Residents with pets will also appreciate a dog wash by the side entrance, perfect after a morning of walking along the sandy coast. Gather around the BBQ on a sunny day, enjoy alfresco dining, potter about in the herb garden, or meet up with other residents for a chat around the feature tree.



GAYUNDAH ESPLANADE

TYDAL

SANDS

LILLA STREET

BUILDING FEATURES

1. BBQ Area with Alfresco Dining
2. Swimming Pool
3. Sun Lounges
4. Relaxation Lawn
5. Residents' Lounge
6. Herb Garden
7. Dog Wash
8. Feature Meeting Tree with Seating



7

CHAPTER FIVE
LOCATION

EFFORTLESS LIVING





Scotts Point



Margate Beach



Rustic Olive



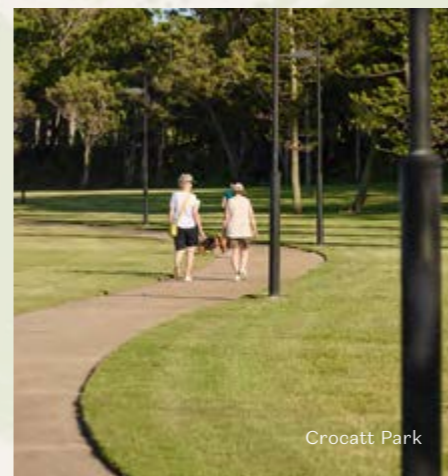
Woody Point Jetty

THE EFFORTLESS LIFE YOU LOVE



The Belvedere

Every convenience is on your doorstep. From vibrant cafes and popular restaurants, to coastal walks and world-class festivals, there's something for everyone. The Belvedere Hotel is Woody Point's most famous landmark, a destination for any occasion. With Woody Point's charming, village feel, you'll discover wonderful experiences and places to replenish your soul.



Crocatt Park



Butcher Baker



Crocatt Park

IT'S EASY TO FALL IN LOVE WITH WOODY POINT'S CHARMING AND LAID-BACK VILLAGE LIFESTYLE.



The Belvedere

LIFE AT EASE

Be it rest and relaxation or discovery and adventure, Tydal has it all. There is a sense of freedom, to experience each moment as it comes. Discover easy living at its best, from leisurely walks along the coast to fishing on the jetty. Go sailing, swimming or pursue what brings you joy.

PARKS NATURE

1. Gayundah Coastal Arboretum
2. Bicentennial Park
3. Apex Park
4. Redcliffe Botanic Gardens
5. Redcliffe Golf Course
6. Pelican Park

LIFESTYLE ENTERTAINMENT

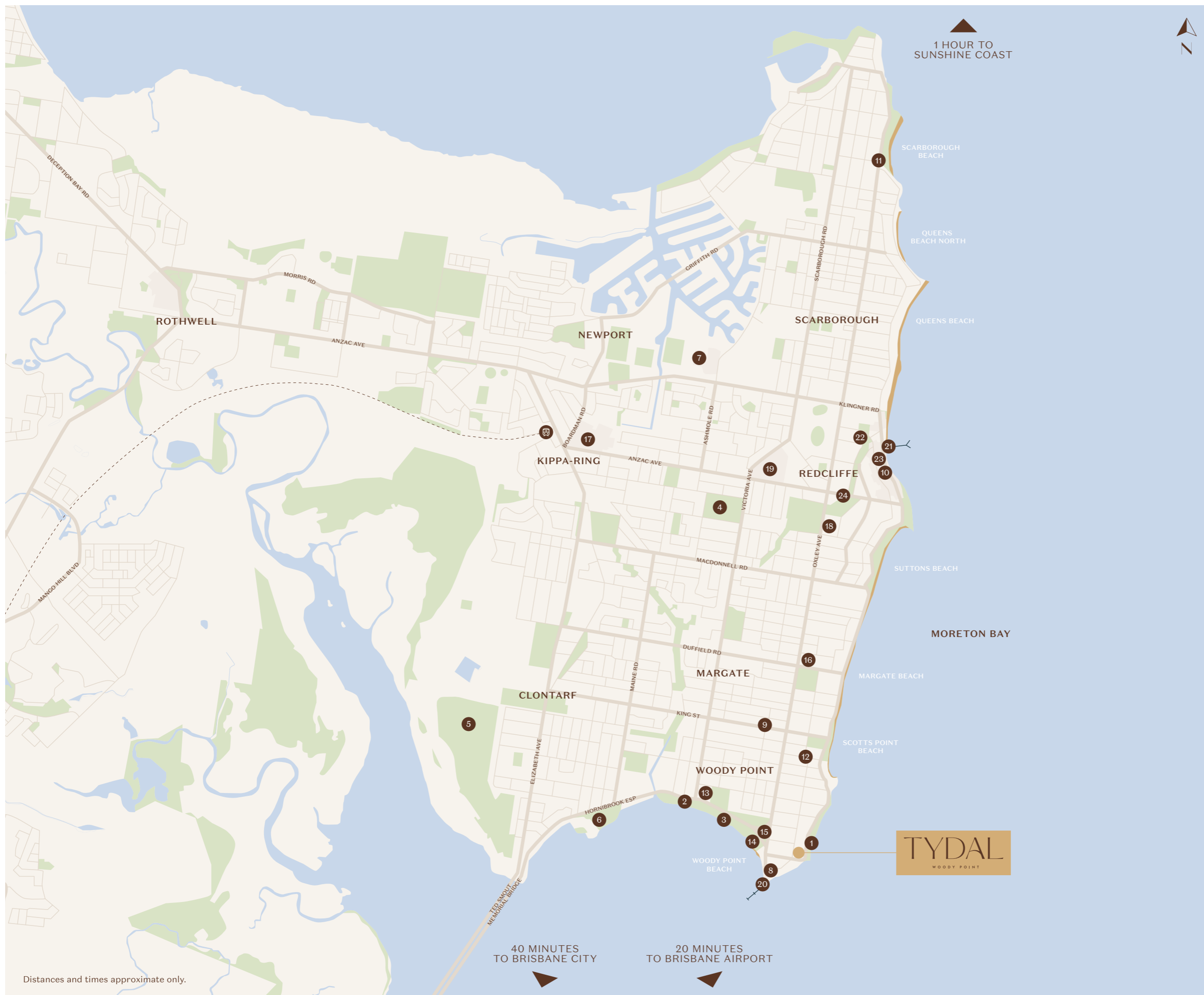
7. Dolphin Stadium
8. Woody Point Village
 - Woody Point Cafe 3Eightnine
 - Butcher Baker Coffeemaker
 - The Belvedere
 - Woody Point Pharmacy
 - Woody Point Medical
9. Woody Point Marketplace
10. The Rustic Olive
11. The Boat Shed Scarborough
12. Organics 4 Life
13. Bramble Bay Bowls Club
14. Humpybong Yacht Club
15. Eildon Croquet Club

LOCAL AMENITY

16. Margate Village Shopping Centre
17. Kippa-Ring Shopping Centre
18. Redcliffe War Memorial Swimming Pool
19. Redcliffe Hospital
20. Woody Point Jetty
- 🚉 Kippa-Ring Train Station

LANDMARKS

21. Redcliffe Jetty
22. Redcliffe Art Gallery
23. Bee Gees Way
24. Redcliffe Museum



Distances and times approximate only.



Woody Point Jetty, only 600m away

T

CHAPTER SIX
TEAM

ARTFULLY DEVELOPED



Developers

TRADERS IN PURPLE

Traders In Purple is an Australian owned national property and construction group delivering a world-class service for over 20 years.

With expertise, knowledge, care and commitment we create and deliver homes that our customers love to live in. Our stringent benchmarks ensure unparalleled craftsmanship, creating exceptional homes and communities, underpinned by a deep understanding of the local region.

With an integrity in everything we do, quality materials and design in a class of its own, our homes set the highest standard and stand the test of time.



Lasail, Newport

Architects

ELLIVO

Ellivo Architects are experienced multi-residential, commercial, and mixed-use architects based locally in Brisbane. Ellivo Architects place great value in the creation of meaningful spaces and places for the people that will inhabit and enjoy them. With a mix of architects and interior designers, they have over 25 years' experience in multi-residential, townhouse, residential and master-planned design, as well as interior fit outs.



Thornelyffe Residences, Kangaroo Point

Landscape Architects

ARCADIA

Arcadia is a landscape architecture and urban design practice established in 2011, with teams based in studios in Sydney, Brisbane, Melbourne and Canberra. An award winning practice working at the intersection of built form and nature, Arcadia's capabilities are positioned to provide thoughtful integration of the natural environment, alongside high-quality architecture.



Inglis Park, Newmarket – Randwick

ACKNOWLEDGEMENT OF COUNTRY

Traders In Purple respectfully acknowledge the Traditional Country across the Moreton Bay region. We acknowledge and pay respects to the Kabi Kabi, Jinibara and Turrbal Traditional Custodians and their elders, past, present and emerging.



Traders In Purple